



Commercial name

## PROPARGO

Company identification

Producer : PROPAGROUP S.p.A.  
Address: Via Genova, 5/B - 10098 RIVOLI (Turin) - Italy  
www.propagroup.com - export@propagroup.com  
Ph. +39 011 9507788 Fax +39 011 9507808

### 1. Description

PROPARGO is an inflatable, reusable bag used to stabilise loads during transport. It is covered on the outside with a highly resistant polypropylene fabric and is equipped with a rapid inflation valve.

### 2. Technical data

Test	U.M.	Value
Width	mm	Nominale $\pm$ 5%
Length	mm	Nominale $\pm$ 5%
Maximum pressure in use	mbar	207
Burst pressure	mbar	551
Composition	Strato esterno	Tessuto Polipropilene 80 g/m <sup>2</sup>
	Strato interno	Polietilene 55 $\mu$ m
	Valvola	Polietilene

### 3. Maximum fillable space

Use the following formula to calculate the maximum space that can be filled between the pallets to be protected:

$$\text{Space} = (\text{Width}/2) - 50\text{mm}$$

Fillable space with standard Propargo:

600 mm width 250 mm fillable space  
880 mm width 405 mm fillable space  
1160 mm width 540 mm fillable space  
1460 mm width 680 mm fillable space

### 4. Correct size

For correct use of PROPARGO, it must touch approximately 70% of the lateral surface of the pallets to be protected.



Example of dimensional calculation:

Pallet size 1200 x 800 x h 2200 mm

PROPARGO length: 2200 mm x 0.70 = 1540 mm

PROPARGO width: 1200 mm x 0.70 = 840 mm

Considering that the PROPARGO will lose 100 mm in width and length when inflating, the correct dimension should be '940 x 1640 mm'.

## 5. Available sizes

Width (mm)	Length (mm)
600	580
600	730
600	880
600	1060
600	1180
600	1470
600	1620
600	1770
600	2060
600	2360
600	2510
600	2660
600	2830
600	2960

Width (mm)	Length (mm)
880	880
880	1180
880	1470
880	1630
880	1770
880	2060
880	2130
880	2370
880	2520
880	2660
880	2960
880	3250

Width (mm)	Length (mm)
1160	1180
1160	1470
1160	1770
1160	2060
1160	2130
1160	2210
1160	2230
1160	2370
1160	2520
1160	2660
1160	2960
1160	3250

Width (mm)	Length (mm)
1460	1520
1460	1830
1460	2130
1460	2440
1460	2590
1460	2740
1460	3050
1460	3350

## 6. Valvola di gonfiaggio

PROPARGO bags are equipped with a quick inflating (and deflating) valve that allows fast filling during use.

PROPARGO bags must be inflated with a special nozzle gun (adaptable to any circuit) with a Venturi action that multiplies the outflow of air.



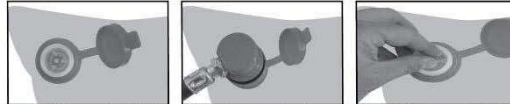
## TECHNICAL DATA SHEET

Document : ST 389  
Edition : 02  
Date : February 2025

PROPARGO



### 7. Print label on product



1. Before inflating, check that the valve is properly closed by turning the stem counter clockwise.  
2. Press the tip against the valve and it will automatically snap on.  
3. For deflating, press the stem and turn it clockwise.

Level  
1

Date  
10/2024

Size  
91 X 122 cm

Order  
EU 137

Serial  
18979

Valve  
CV



#### INSTRUCTIONS

1. DO NOT EXCEED THE FOLLOWING MAXIMUM PRESSURES:

USA      EU  
3 PSI      0,207 BAR

2. RE-CHECK PRESSURE 30 MINUTES AFTER FILLING

#### CAUTION

1. NOT FOR RECREATIONAL USE
2. USE EYE AND EAR PROTECTION WHEN FILLING
3. DO NOT STAND DIRECTLY OVER OR IN FRONT OF BAG WHILE FILLING
4. USE REGULATOR AND FILTER IN AIR LINE
5. PROTECT AGAINST PUNCTURE BY THE USE OF ADEQUATE BUFFERING MATERIAL BETWEEN BAG AND PRODUCT
6. DO NOT PUNCTURE TO DEFLATE DEPRESS THE STEM AND TURN CLOCKWISE OF THE VALVE
7. KEEP ALWAYS UNDER COVER. DO NOT EXPOSE TO DIRECT SUNLIGHT



Propagroup S.p.A.  
Via Genova 5/B  
10098 Rivoli (Turin) Italy  
[www.propagroup.com](http://www.propagroup.com)



### 8. Production and Quality

PROPAGROUP is UNI EN ISO9001 / ISO14001 certified and produces in accordance with the requirements of the main European and international standards in the sector.

The values indicated here are the result of standardised lab tests and meant only as an indication to help select and use the products. The user is responsible for ensuring the suitability and completeness of such information in relation to how the product is to be used.

**Written by:** Technical Management

**Revised by:** Quality Department

**Approved by:** Management